

JULY 2020 FEATURE RELEASE FOR WECONNECT

WeConnect Features Update

We're excited to announce a new staff page feature for all WeConnect websites. This new feature utilizes staff information that is already available in the dashboard of your site — meaning adding and updating staff contact information is now easier than ever!

Add/Edit Staff Member(s)

1. Add, or edit, the staff member(s) you would like to showcase on your staff page by checking the Display on Staff Listing Page within the specific staff member(s). **(IMAGE 1)**
2. You can see what staff members will show on the staff page under the overview screen. Staff shown on the staff page will have the Staff Listing designation in purple. **(IMAGE 2)**
3. To add the staff page to the menu bar please go to: Menu and then find the Staff Listing menu and click the edit button. Then check the Make Visible in Navigation option and click Save Changes. **(IMAGE 3)**
4. Your staff page will now be in the menu bar and on the site. **(IMAGE 4)**

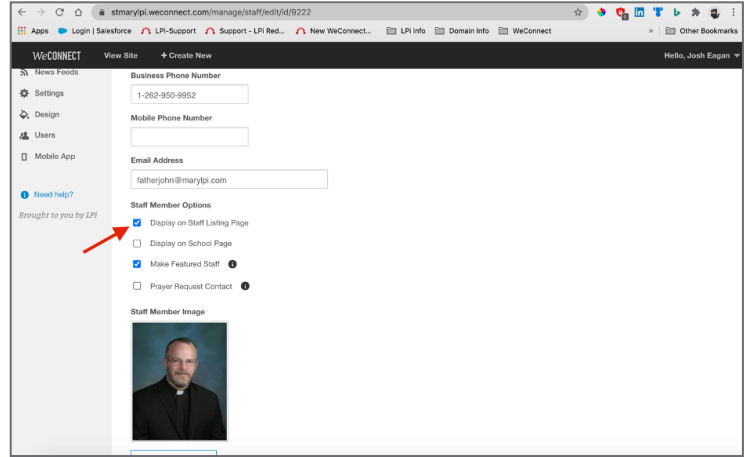


IMAGE 1

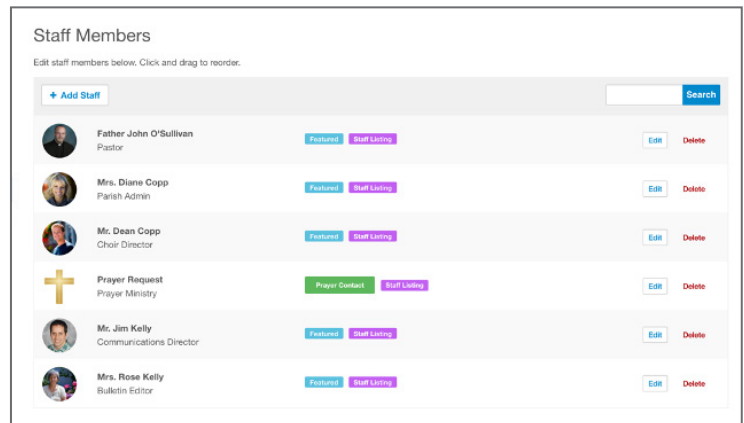


IMAGE 2

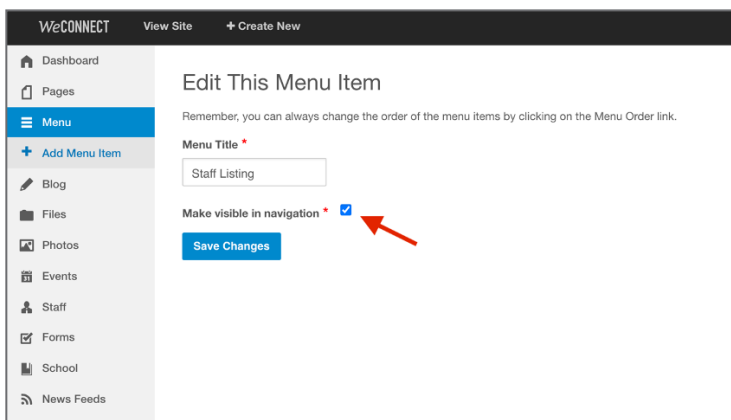


IMAGE 3

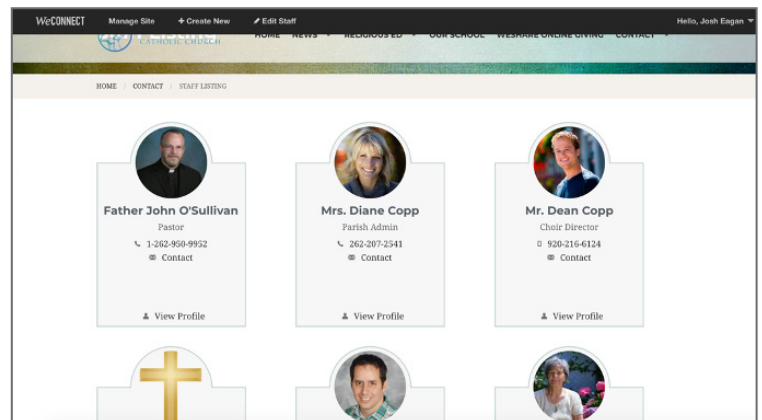


IMAGE 4